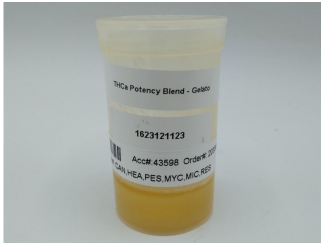


**Hemp & Tea Company**  
 15906 Old Statesville Road, Suite A  
 Huntersville 28078  
 Info@hempandteacompany.com  
 704-606-9460

**Sample: 12-26-2023-43598W4818**  
 Sample Received: 12/26/2023;  
 Report Created: 12/29/2023; Expires: 12/28/2024

**THCa Potency Blend Gelato**  
 Concentrate & Extracts



**45.243 %**

Total THC

**0.276 %**

Δ-9 THC

**74.656 %**  
 Total Cannabinoids

**19.476 %**  
 Total CBD

## Cannabinoids

(Testing Method: HPLC, CON-P-3000)  
 Date Tested: 12/26/2023

Complete

Analyte	LOD	LOQ	Mass	Mass	
	%	%	%	mg/g	
Δ-8-Tetrahydrocannabinol (Δ-8 THC)	0.1000	0.1500	ND	ND	
Δ-9-Tetrahydrocannabinol (Δ-9 THC)	0.1000	0.1500	0.276	2.760	
Δ-9-Tetrahydrocannabinolic Acid (THCA-A)	0.1000	0.1500	51.274	512.740	
Δ-9-Tetrahydrocannabinophorol (Δ-9-THCP)	0.1000	0.1500	ND	ND	
Δ-9-Tetrahydrocannabivarin (Δ-9-THCV)	0.1000	0.1500	ND	ND	
Δ-9-Tetrahydrocannabivarinic Acid (Δ-9-THCVA)	0.1000	0.1500	0.168	1.680	
R-Δ-10-Tetrahydrocannabinol (R-Δ-10-THC)	0.1000	0.1500	ND	ND	
S-Δ-10-Tetrahydrocannabinol (S-Δ-10-THC)	0.1000	0.1500	ND	ND	
9R-Hexahydrocannabinol (9R-HHC)	0.1000	0.1500	ND	ND	
9S-Hexahydrocannabinol (9S-HHC)	0.1000	0.1500	ND	ND	
Tetrahydrocannabinol Acetate (THCO)	0.1000	0.1500	ND	ND	
Cannabidivarin (CBDV)	0.1000	0.1500	ND	ND	
Cannabidivarinic Acid (CBDVA)	0.0580	0.1500	<LOQ	<LOQ	
Cannabidiol (CBD)	0.1000	0.1500	0.740	7.400	
Cannabidiolic Acid (CBDA)	0.1000	0.1500	21.364	213.640	
Cannabigerol (CBG)	0.1000	0.1500	ND	ND	
Cannabigerolic Acid (CBGA)	0.1000	0.1500	0.576	5.760	
Cannabinol (CBN)	0.1000	0.1500	ND	ND	
Cannabinolic Acid (CBNA)	0.1000	0.1500	ND	ND	
Cannabichromene (CBC)	0.1000	0.1500	ND	ND	
Cannabichromenic Acid (CBCA)	0.1000	0.1500	0.258	2.580	
<b>Total</b>			<b>74.656</b>	<b>746.560</b>	

Total THC = THCa \* 0.877 + Δ9-THC; Total CBD = CBDA \* 0.877 + CBD; LOQ = Limit of Quantitation; ND = Not Detected.

Total THC Measurement of Uncertainty: ± 0.050%  
 Total CBD Measurement of Uncertainty: ± 2.000%  
 THCO potency analysis does not designate quantitative specificity of Δ-8-THCO and Δ-9-THCO isomers



New Bloom Labs  
 6121 Heritage Park Drive, A500  
 Chattanooga, TN 37416  
 (844) 837-8223  
 TN DEA#: RN0563975

*Natalie Siracusa*  
 Natalie Siracusa  
 Laboratory Director

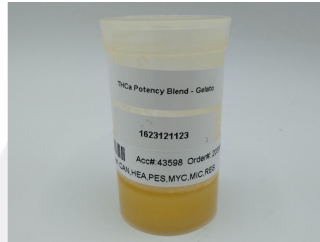
Powered by reLIMS  
 info@relims.com

**Hemp & Tea Company**  
 15906 Old Statesville Road, Suite A  
 Huntersville 28078  
 Info@hempandteacompany.com  
 704-606-9460

**Sample: 12-26-2023-43598W4818**

Sample Received: 12/26/2023;  
 Report Created: 12/29/2023; Expires: 12/28/2024

**THCa Potency Blend Gelato**  
 Concentrate & Extracts



## Heavy Metals

(Method of Analysis: ICP/MS, CON-P-7000)

Date Tested: 12/27/2023

Analyte	LOQ	Mass
	PPM	PPM
Arsenic	0.0992	<0.0992
Cadmium	0.0992	<0.0992
Lead	0.0992	<0.0992
Mercury	0.0992	<0.0992
Palladium	0.2480	<0.2480
Selenium	0.0992	<0.0992



New Bloom Labs  
 6121 Heritage Park Drive, A500  
 Chattanooga, TN 37416  
 (844) 837-8223  
 TN DEA#: RN0563975

*Natalie Siracusa*  
 Natalie Siracusa  
 Laboratory Director

Powered by reLIMS  
 info@relims.com

**Hemp & Tea Company**  
 15906 Old Statesville Road, Suite A  
 Huntersville 28078  
 Info@hempandteacompany.com  
 704-606-9460

**Sample: 12-26-2023-43598W4818**

Sample Received: 12/26/2023;

Report Created: 12/29/2023; Expires: 12/28/2024

**THCa Potency Blend Gelato**  
 Concentrate & Extracts



## Pesticides

(Testing Method: LC/MS/MS & HPLC-UV, CON-P-5000)

Date Tested: 12/26/2023

Analyte	LOQ	Mass	Analyte	LOQ	Mass
	PPM	PPM		PPM	PPM
Acephate	0.100	<0.100	Imazalil	0.100	<0.100
Acequinocyl	0.100	<0.100	Imidacloprid	0.200	<0.200
Acetamiprid	0.100	<0.100	Kresoxim Methyl	0.100	<0.100
Aldicarb	0.100	<0.100	Malathion	0.100	<0.100
Avermectin B1A	0.100	<0.100	Metaxyl	0.100	<0.100
Avermectin B1B	0.100	<0.100	Methiocarb	0.100	<0.100
Azoxystrobin	0.100	<0.100	Methomyl	0.100	<0.100
Bifenazate	0.100	<0.100	Mevinphos	0.100	<0.100
Bifenthrin	0.100	<0.100	MGK-264	0.100	<0.100
Boscalid	0.100	<0.100	Myclobutanil	0.100	<0.100
Captan	0.700	<0.700	Naled	0.250	<0.250
Carbaryl	0.100	<0.100	Oxamyl	0.500	<0.500
Carbofuran	0.100	<0.100	Paclobutrazole	0.100	<0.100
Chlorantraniliprole	0.100	<0.100	Parathion Methyl	0.100	<0.100
Chlorfenapyr	0.100	<0.100	Pentachloronitrobenzene	0.150	<0.150
Chlormequat	0.100	<0.100	Permethrins	0.100	<0.100
Chlorpyrifos	0.100	<0.100	Phosmet	0.100	<0.100
Clofentazine	0.100	<0.100	Piperonyl Butoxide	1.000	<1.000
Coumaphos	0.100	<0.100	Prallethrin	0.100	<0.100
Cyfluthrin	0.500	<0.500	Propiconazole	0.100	<0.100
Cypermethrin	0.500	<0.500	Propoxur	0.100	<0.100
Diazinon	0.100	<0.100	Pyrethrins	0.500	<0.500
Dichlorvos (DDPV)	0.050	<0.050	Pyridaben	0.100	<0.100
Dimethoate	0.100	<0.100	Spinetoram	0.100	<0.100
Dimethomorph	0.100	<0.100	Spinosad A	0.050	<0.050
Ethoprophos	0.100	<0.100	Spinosad D	0.050	<0.050
Etofenprox	0.100	<0.100	Spiromesifen	0.100	<0.100
Etoxazole	0.100	<0.100	Spirotetramat	0.100	<0.100
Fenhexamid	0.100	<0.100	Spiroxamine	0.100	<0.100
Fenoxycarb	0.100	<0.100	Tebuconazole	0.100	<0.100
Fenproximate	0.100	<0.100	Thiacloprid	0.100	<0.100
Fipronil	0.100	<0.100	Thiamethoxam	0.100	<0.100
Flonicamid	0.100	<0.100	Trifloxystrobin	0.100	<0.100
Fludioxonil	0.100	<0.100	Chlordane	0.100	Not Detected
Hexythiazox	0.100	<0.100	Daminozide	0.100	Not Detected

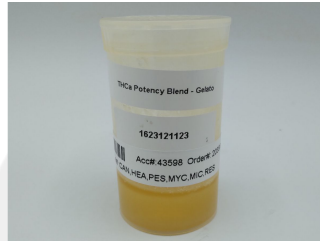
**Hemp & Tea Company**  
 15906 Old Statesville Road, Suite A  
 Huntersville 28078  
 Info@hempandteacompany.com  
 704-606-9460

**Sample: 12-26-2023-43598W4818**

Sample Received: 12/26/2023;

Report Created: 12/29/2023; Expires: 12/28/2024

**THCa Potency Blend Gelato**  
 Concentrate & Extracts



## Mycotoxins

(Testing Method: LC/MS/MS, CON-P-5000)

Date Tested: 12/26/2023

Analyte	LOQ	Mass
	PPB	PPB
Aflatoxin B1	5.000	<5.000
Aflatoxin B2	5.000	<5.000
Aflatoxin G1	5.000	<5.000
Aflatoxin G2	5.000	<5.000
Ochratoxin A	20.000	Not Detected



New Bloom Labs  
 6121 Heritage Park Drive, A500  
 Chattanooga, TN 37416  
 (844) 837-8223  
 TN DEA#: RN0563975

*Natalie Siracusa*  
 Natalie Siracusa  
 Laboratory Director

Powered by reLIMS  
 info@relims.com

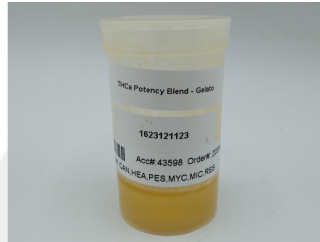
**Hemp & Tea Company**  
 15906 Old Statesville Road, Suite A  
 Huntersville 28078  
 Info@hempandteacompany.com  
 704-606-9460

Sample: 12-26-2023-43598W4818

Sample Received: 12/26/2023;

Report Created: 12/29/2023; Expires: 12/28/2024

THCa Potency Blend Gelato  
 Concentrate & Extracts



## Microbials

(Testing Method: qPCR & 3M Petrifilm & SIM Plate, CON-P-6000, CON-P-9000)

Date Tested: 12/27/2023

Analyte	LOQ	Units
	CFU/g	CFU/g
Total Yeast and Mold Count	8	<8
Total Aerobic Bacteria Count	8	<8
Total Coliform Count	8	<8
Total Enterobacteriaceae/BTGN Count	8	<8
Aspergillus spp.		Not Detected
Shigatoxigenic Escherichia coli (STEC)		Not Detected
Salmonella		Not Detected
Listeria monocytogenes		Not Detected



New Bloom Labs  
 6121 Heritage Park Drive, A500  
 Chattanooga, TN 37416  
 (844) 837-8223  
 TN DEA#: RN0563975

*Natalie Siracusa*  
 Natalie Siracusa  
 Laboratory Director

Powered by reLIMS  
 info@relims.com

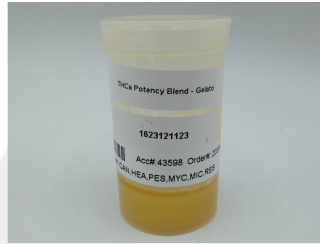
**Hemp & Tea Company**  
 15906 Old Statesville Road, Suite A  
 Huntersville 28078  
 Info@hempandteacompany.com  
 704-606-9460

**Sample: 12-26-2023-43598W4818**

Sample Received: 12/26/2023;

Report Created: 12/29/2023; Expires: 12/28/2024

**THCa Potency Blend Gelato**  
 Concentrate & Extracts



## Residual Solvents

(Testing Method: HS-GC/MS, CON-P-8000)

Date Tested: 12/26/2023

Analyte	LOQ	Mass	Analyte	LOQ	Mass
	PPM	PPM		PPM	PPM
1, 2 Dichloroethane	2.000	<2.000	Ethanol	1000.000	<1000.000
1,1 Dichloroethene	2.000	<2.000	Ethyl Acetate	250.000	<250.000
1, 2 Dimethoxyethane	20.000	<20.000	Ethyl Ether	250.000	<250.000
1, 4 Dioxane	100.000	<100.000	Ethylbenzene	100.000	<100.000
1,1,1 Trichloroethane	20.000	<20.000	Ethylene Oxide	5.000	<5.000
1,1,2 Trichloroethane	20.000	<20.000	Hexane	100.000	<100.000
1,2,3,4 Tetrahydronaphthalene	20.000	<20.000	Isobutanol	1000.000	<1000.000
2 Ethoxyethanol	20.000	<20.000	Methanol	100.000	<100.000
2 Hexanone	20.000	<20.000	n-Heptane	1000.000	<1000.000
2 Propanol	500.000	<500.000	n-Pentane	100.000	<100.000
Acetone	250.000	<250.000	n-Propanol	1000.000	<1000.000
Acetonitrile	20.000	<20.000	Nitromethane	10.000	<10.000
Benzene	1.000	<1.000	o-Xylene, m-Xylene, p-Xylene	100.000	<100.000
Butane	1000.000	<1000.000	Propane	1000.000	<1000.000
Chlorobenzene	100.000	<100.000	tert-Butanol	1000.000	<1000.000
Chloroform	2.000	<2.000	Tetrahydrofuran	100.000	<100.000
cis 1,2 Dichloroethene	100.000	<100.000	Toluene	100.000	<100.000
Diacetyl	100.000	<100.000	trans 1, 2 Dichloroethene	100.000	<100.000
Dichloromethane	100.000	<100.000	Trichloroethene	20.000	<20.000



New Bloom Labs  
 6121 Heritage Park Drive, A500  
 Chattanooga, TN 37416  
 (844) 837-8223  
 TN DEA#: RN0563975

*Natalie Siracusa*  
 Natalie Siracusa  
 Laboratory Director

Powered by reLIMS  
 info@relims.com